

# Anti-blocking Agent Masterbatch

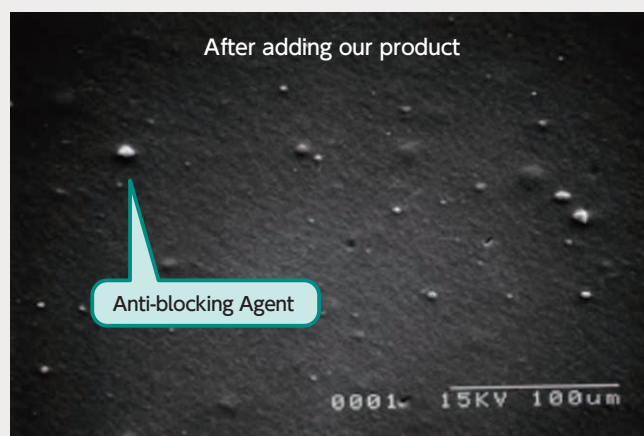
## Application

Masterbatch imparting an anti-blocking effect on various films and sheets

## Characteristics

- A microscopic rough surface of film/sheet created by adding our product exhibits an anti-blocking effect (See the electron micrographs below).
- An extensive product lineup applicable to various plastic films and sheets made of metallocene LLD-PE, PP, PET, etc.
- Capable of improving the versatility of an uncolored resin.

### ■ Electron micrographs (100x)



## Representative Products

Product name	Applicable resin	Pure content of Anti-blocking Agent
G PE1500	Metallocene LLD-PE	10%
S PE1100	Metallocene LLD-PE, other kind of PE	10%
S PE1200	Metallocene LLD-PE, other kind of PE	10%
G PP2100	PP	10%
G PS3700	PS	10%
G PT4001-2	PET	10%
G PT4003-2	PET	10%

## Evaluation Results

### ■ Performance comparison : Evaluation example using metallocene LLD-PE film

Additive	Additive amount	Blocking force (N)	Haze value (%)
Metallocene LLD-PE (uncolored)	0%	1.57	3.2
Natural silica	0.30%	0.87	7.2
Acrylic beads	0.30%	1.15	5.2
Our G PE1500	3%	0.73	5.6
Our S PE1100	3%	0.80	6.3
Our S PE1200	3%	0.25	8.0

\*Blocking force (our company standard); Force to pull two films apart. The smaller the number, the easier to come off.

\*Haze value : JIS K 7136 The smaller the number, the more transparency. 50μm×2 sheets

\*Above is our internal experimental data. It is not guaranteed.